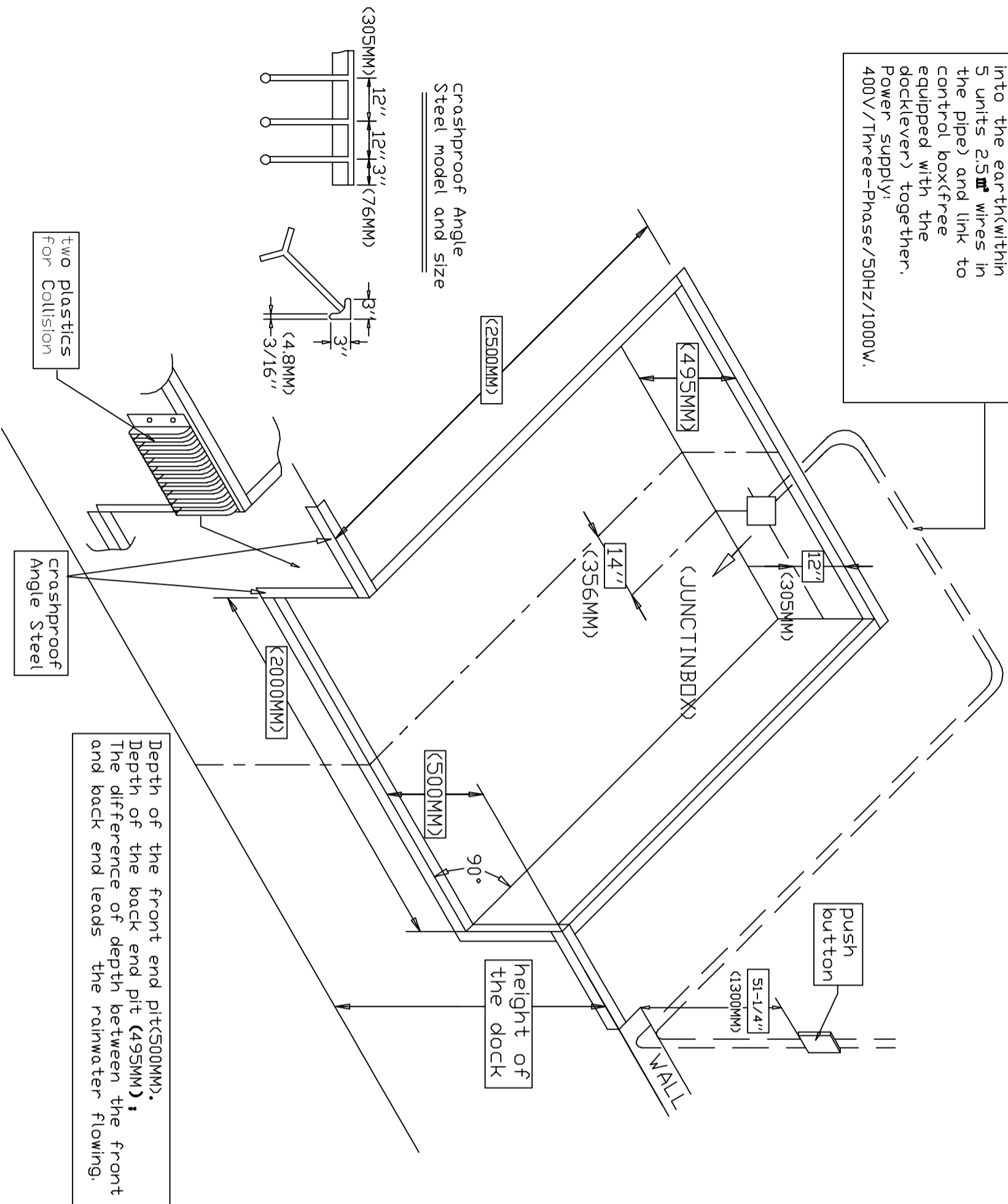


Put the pipe diameter of 25mm into the earth (within 5 units 2.5mm wires in the pipe) and link to control box (free equipped with the dock lever) together. Power supply: 400V/Three-Phase/50Hz/1000W.



hydraulic dock leveler
construction drawing

H 6*8 3500LBS

IMPORTANT:

- BUYER TO PREPARE THE PIT STRICTLY ACCORDING TO THE SELLER'S PIT DRAWING AND THE PIT MUST BE SQUARE & PLUMB.

INCLUDING:

- ELECTRICAL CONDUIT WITH WIRES FROM CONTROL BOX TO JUNCTION BOX (NOT SMALLER THAN 85MMx85MM) AT THE REAR PIT WALL.
- POWER SUPPLY AND ISOLATOR NEXT TO THE CONTROL BOX OF THE DOCK LEVELER.
- CURB ANGLES (NOT SMALLER THAN 75MMx75MM) WITH SUITABLE ANCHORS (DIA.13MMx153MM) SPACED AT 305MM.

SCALE-NITS

This drawing is the soul property of (TAS) Do not copy/reproduce /share with others without our permission.

GROUP :- Entrance Automation

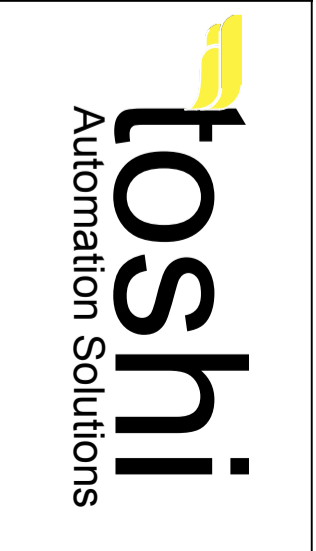
REV	DATE	DESCRIPTION	DRAWN BY
00	05-04-19	ISSUED FOR APPROVAL	SOHRAB KHAN

PRODUCT :- Toshi Electric Hydraulic Dock Leveler

DATE	APPROVED BY
05-04-19	MOHD.AMIL

MODEL NO:- T-EH-DL

DATE	DRAWN BY	CHECKED BY	APPROVED BY
05-04-19	SOHRAB KHAN	MOHD.AMIL	KAPIL SACHDEV



PRO NO:- PRO0093 DRAWING NO :- GA-475 (PROPR00093) T-EH-DL