

# R50

## OPERATOR FOR INDUSTRIAL SWING AND TELESCOPIC SLIDING GATES



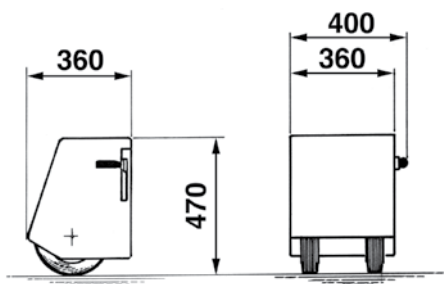
- The R50 is designed to operate large doors or gates in applications in which standard actuators cannot be used.
- On R50 in the event of power failure, simply operate the outer lever, then open the door/gate manually.
- The suspension system used on R50, installed along the edge of the gate leaf, ensures a tolerance of up to 4 cm when moving over uneven surfaces.



FOR SWING GATES WITH EACH LEAF UP TO 10 m LONG AND WEIGHING UP TO 2.000 kg

AA21580	R-50 1-phase
AA21581	R-50 ICE* 1-phase

\* ICE: With special lubricants (for immediate starts with temperatures as low as -30°C)



8 x

Dimensions in mm

TECHNICAL DATA		R50
Max. leaf length	m	10
Max. leaf weight	kg	2.000
Operating speed	m/s	0,180
Average opening time 90°	s	78
Power supply	V	230
Power absorbed	A	1,96
Actuator weight	kg	45
Protection grade	IP	54
Operating temperature	°C	-10 ÷ +55
Daily cycles suggested		300
Service	%	60
Nr of consecutive cycles guar.		4/78s

# ACCESSORIES FOR R50



**ABT2000 T2-CRX**  
control board (for 1 or 2 R50)  
with thrust regulator and radio  
receiver 433MHz. With box.  
See pages 142 and 143



**ABT2001W T2 Wi-Fi**  
control board (for 1 or 2 R50) with  
thrust regulator and MASTER  
Wi-Fi. With box.  
See pages 116, 142 and 143



**ACG8660 HORIZONTAL LOCK**  
12Vac



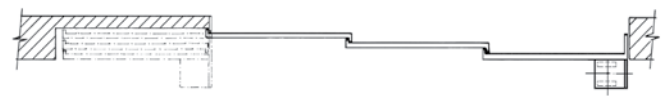
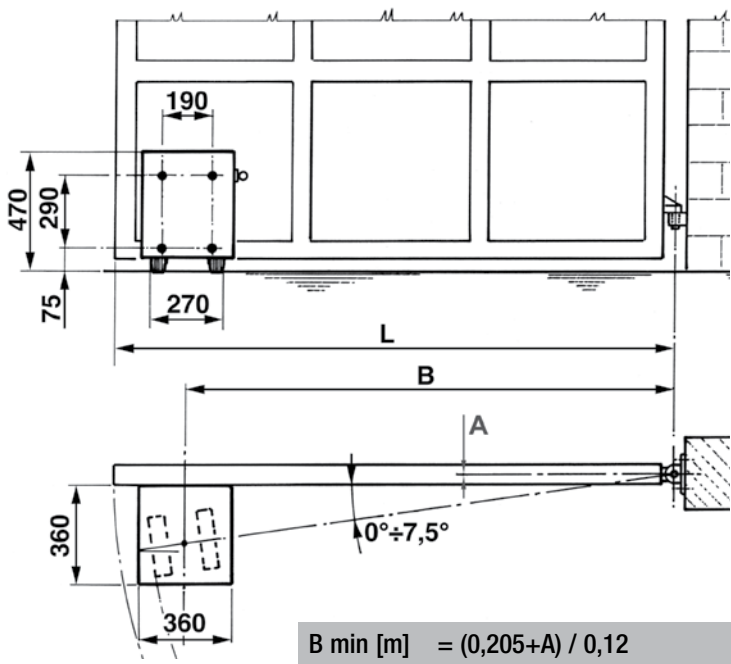
**ACG8670 HORIZONTAL LOCK**  
12Vac



**ACG8650 VERTICAL LOCK**  
12Vac



**ACG5000 MECHANICAL BOLT**  
for 2-leaf gates to latch closed  
gate to the ground



$B \text{ min [m]} = (0,205+A) / 0,12$   
 $B \text{ [m]} = 0,9 \times L$   
 Opening time [sec] = 7,85 x L



# R60

## OPERATOR FOR INDUSTRIAL SWING AND TELESCOPIC SLIDING GATES



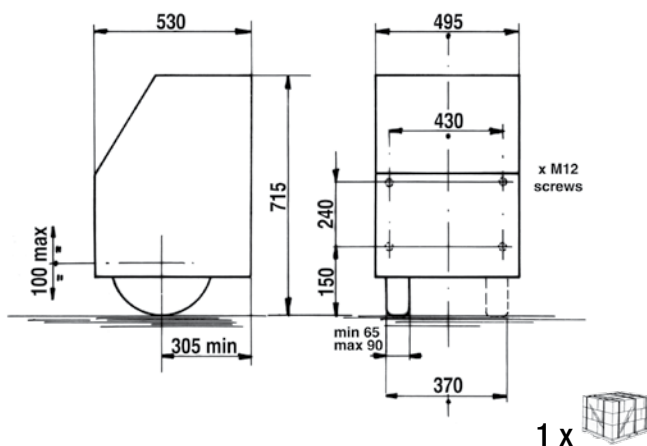
- R60 is designed to operate large doors or gates in applications in which standard actuators cannot be used.
- The suspension system used on R60, installed along the edge of the gate leaf, ensures a tolerance of up to 10 cm when moving over uneven surfaces.
- All motors are fan-cooled and they are both endowed with limit switches.



FOR SWING GATES WITH EACH LEAF UP TO 15 m LONG AND WEIGHING UP TO 12.000 kg

AA22002	R-60 3-phase
AA22011	R-60 ICE* 3-phase

\* ICE: With special lubricants (for immediate starts with temperatures as low as -30°C)



Dimensions in mm

TECHNICAL DATA		R60
Max. leaf length	m	15
Max. leaf weight	kg	12000
Operating speed	m/s	0,164
Average opening time 90°	s	116
Power supply	V	400
Power absorbed	A	3,1
Actuator weight	kg	156
Protection grade	IP	55
Operating temperature	°C	-10 ÷ +55
Daily cycles suggested		300
Service	%	100
Nr of consecutive cycles guar.		300/100s

# ACCESSORIES FOR R60



**ACG8550 WHEEL**  
for R60



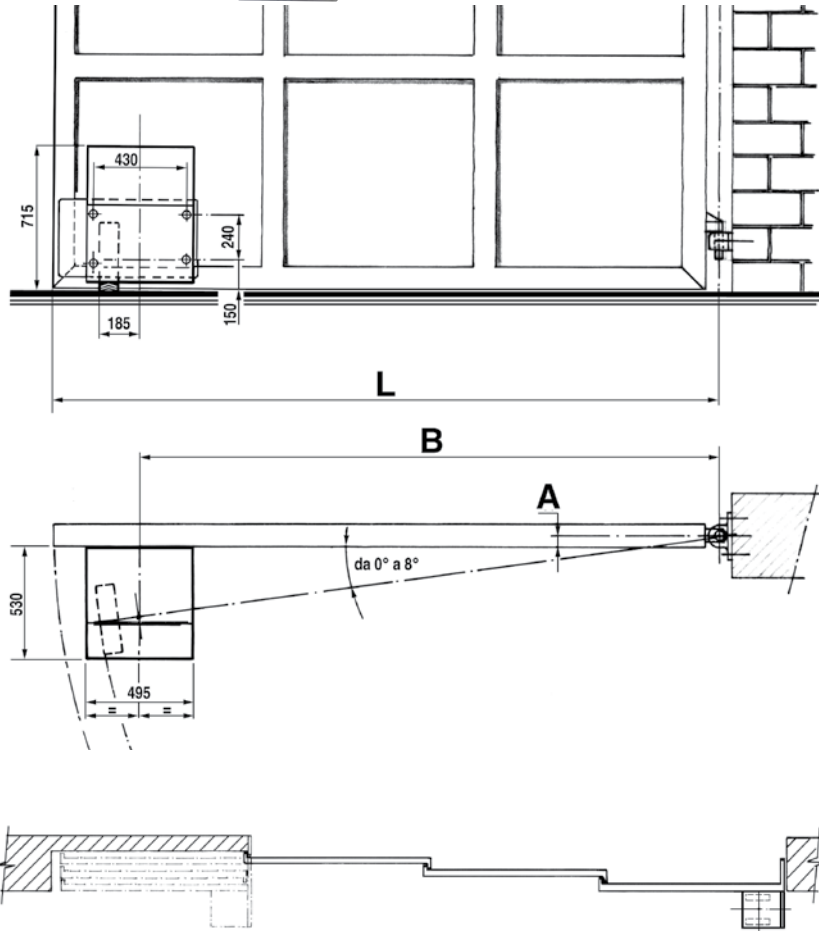
**ABS1/R2RX S1/R2-CRX**  
control board for 1 R60 on  
telescopic sliding gate  
with box  
See page 139 and 143



**ABKS160 KS2/R2**  
control board (for 1 or 2 R60)



**ACG5470 EXPANDER**  
for KS2 (to add extra features to  
KS2 control board).



$$B \text{ min} = (0,31+A) / 0,14 \text{ [m]}$$

$$B = 0,81 \times L \text{ [m]}$$

$$\text{Opening time} = 7,77 \times L \text{ [sec]}$$

